

■ Getting started

- ◇ This cloning software is designed to perform data setting and cloning for the IC-2300H FM TRANSCEIVER.
- ◇ **HELP WINDOW:** The CS-2300H has a help window to describe functions and operation.

■ System requirements

To use this program, the following hardware and software are required:

A PC with one of the following operating systems.

- 32 bit version of Microsoft® Windows® XP installed.
- 32 or 64 bit version of Microsoft® Windows® 7 or Microsoft® Windows Vista® installed.
- A USB port or an RS-232C port.

Other item

Optional OPC-478 CLONING CABLE (RS-232C type) or OPC-478UC CLONING CABLE (USB type.)

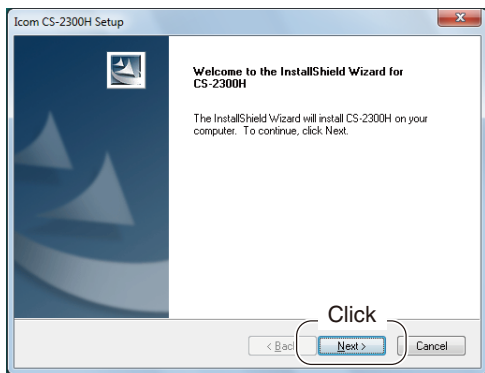
NOTE:

- To use the OPC-478UC USB type CLONING CABLE, a USB driver installation is necessary. The driver is supplied with the OPC-478UC. See the OPC-478UC instruction manual for installation details.
- The USB driver is not supported by the 64 bit version of Microsoft® Windows Vista®.

■ Software installation

⚡ When installing the software, log on as the **administrator**.

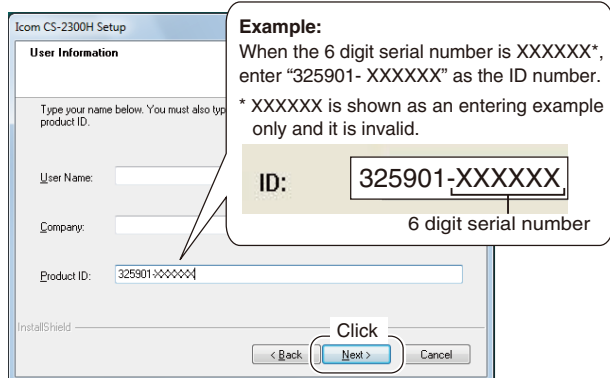
- ① Make sure Windows is started and no other applications are running.
- ② Insert the CD into a CD drive.
- ③ Double-click "Setup.exe" to start the installation.
- ④ "Welcome to the InstallShield Wizard for CS-2300H" will appear. Click [Next>].



- ⑤ "User Information" will appear, and then type your name, your company name (optional) and the product ID number in the following format.

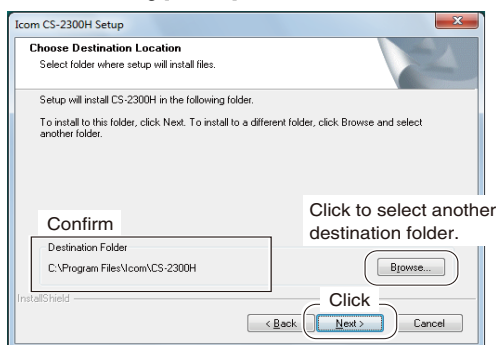
- ID number: 325901-(6 digit serial number)

Then click [Next >].



- ⑥ "Choose Destination Location" will appear as shown. Then click [Next>] to install the software in the destination folder. (Example: C:\Program Files\Icom\CS-2300H)

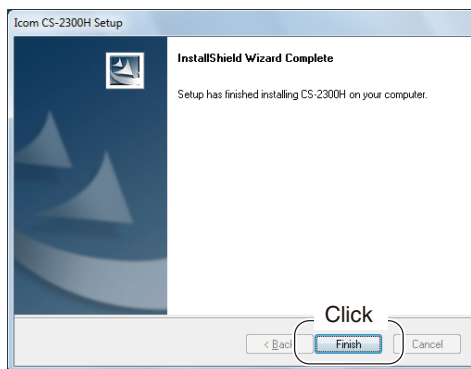
- If desired, click [Browse...] to select another destination folder before clicking [Next >].



- ⑦ After the installation is completed, "InstallShield Wizard Complete" will appear, then Click [Finish].

- ⑧ Eject the CD.


- ⑨ Program group 'CS-2300H' appears in "All Programs" in the Windows Start menu. A 'CS-2300H' short cut icon appears on the desktop screen.

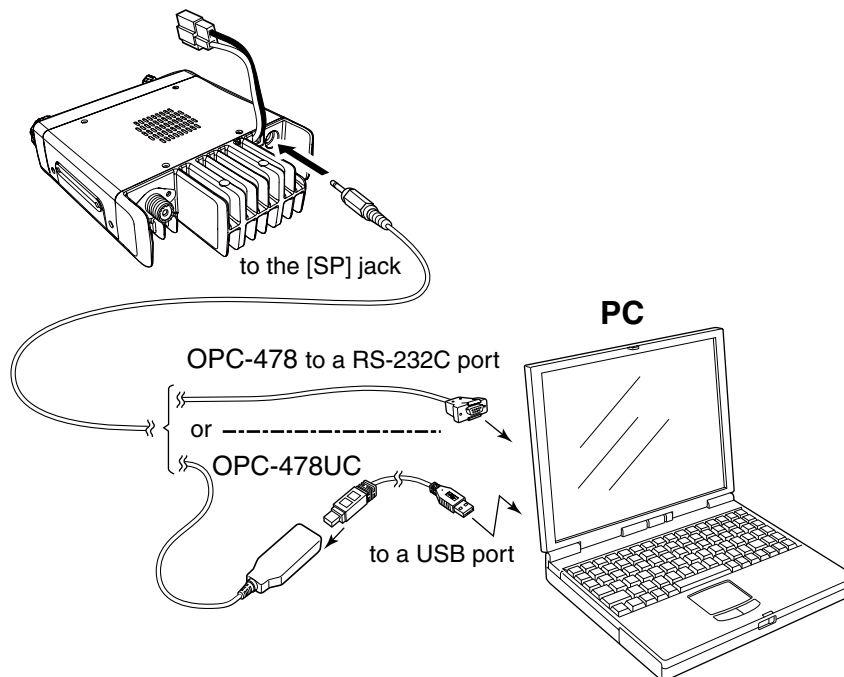


- To uninstall the cloning software, select "Control Panel" in the Start menu, and then click "Add or Remove Programs." Select the program 'CS-2300H' and then click [Remove].

■ Connection

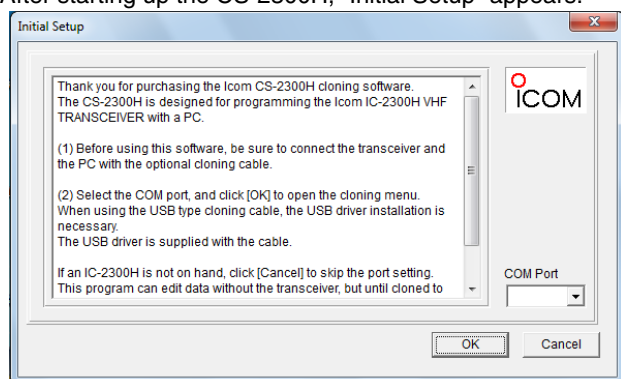
All cloning operations are performed from the computer's keyboard.

- ① Connect the cloning cable and the PC, as illustrated.
- ② Push [] on the transceiver to turn ON the power.



■ COM Port setting

After starting up the CS-2300H, "Initial Setup" appears.




- ① Click the [▼] button, then select the correct COM port number from the drop-down list.
- ② Click [OK] to open the cloning screen.

To program the other settings without the transceiver connected, click [Cancel] to skip the COM port setting.

/// When programming the software without the transceiver, some items will not appear on the setting screen.

■ Programming information

- To avoid data loss, you should download all the transceiver's data before entering or editing parameters using the cloning software, even when the transceiver is factory fresh.

Click , or click [Clone] in the top menu of the cloning software, and then select "Read <- TR" to start downloading.

- While downloading or uploading cloning data, NEVER turn OFF the transceiver or the PC, and NEVER disconnect the USB cable or connection cables. Otherwise, the data could be lost or deleted.

NOTE: Please refer to the Help file of the cloning software for assistance with the functions or settings.

To open the Help file, click [Help] in the top menu of the cloning software and select "Contents," or simply push the [F1] key of the PC's keyboard.

Icom, Icom Inc. and the Icom logo are registered trademarks of Icom Incorporated (Japan) in Japan, the United States, the United Kingdom, Germany, France, Spain, Russia and/or other countries.
Microsoft, Windows and Windows Vista are registered trademarks of Microsoft Corporation in the United States and/or other countries.
All other products or brands are registered trademarks or trademarks of their respective holders.